



**M04660 HARVEST TANK (660 LT)**

Raw Material: Polyethylene

Double Hull Filled with polyurethane for optimum isolation

Easy to clean

Suitable for forklift handling

Convex Bottom Design and two hole for easy drain



**M04660  
TECHNICAL DATA**

Outside Dimensions:

Width: 99.5 cm

Length: 118 cm

Height: 81 cm

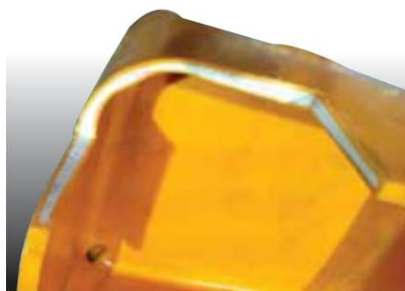
Inside Dimensions:

Width: 93 cm

Length: 112 cm

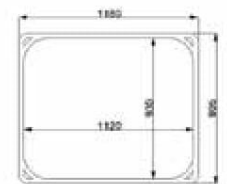
Height: 65 cm

Capacity: 660 LT



**POLYURETHANE FILLED  
FOR ISOLATION**

MARTEK - Harvest Tanks



**HARVEST TANK  
TECHNICAL DRAWING**